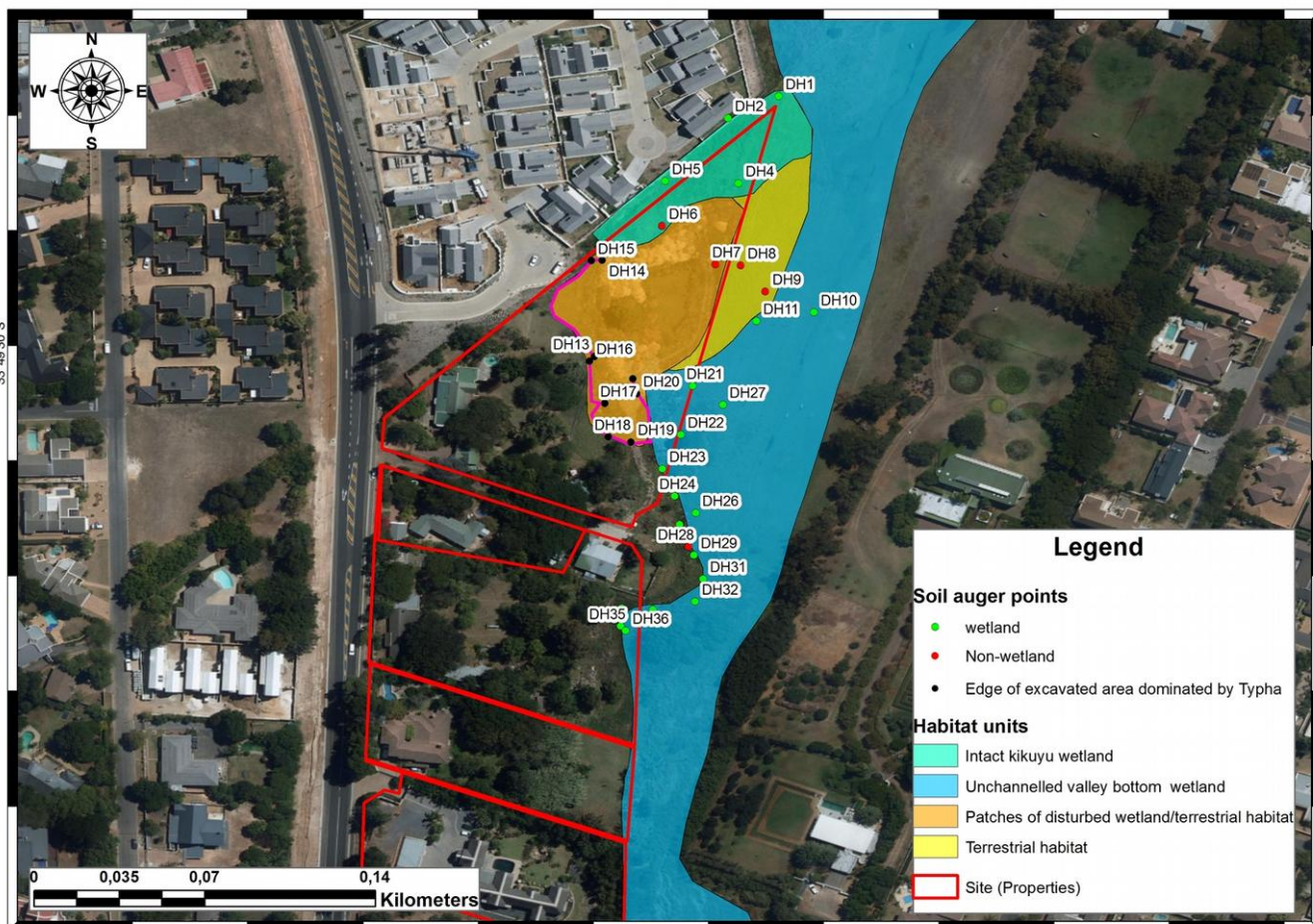


## Appendix:

### Map and descriptions of observation points for wetland delineation



**Figure A1:** Map of sampling/observation points for "Durbanville Gardens" wetland delineation, with a focus on vacant Erf 56 (RE) and adjacent land

**Table A1:** Description of sampling/observation points for "Durbanville Gardens" wetland delineation, with a focus on vacant Erf 56 (RE)

Sampling / Observation point	Landscape setting	Vegetation*	Soil	Other notes
DH1	Slope	Dense, tall growth of <i>Pennisetum clandestinum</i> (Kikuyu lawn grass) [f]	0-10cm: clay 10-30cm: clayey loam with mottles (sparse, distinct) 30-45cm: sandy loam with mottles (sparse, distinct) @45-50cm: dense clay subsoil layer	Near triangular northern corner of site Perched wetland (hillslope seep)
DH2	Slope	Dense, tall growth of <i>Pennisetum clandestinum</i> (Kikuyu lawn grass) [f] <i>Acacia saligna</i> (Port Jackson willow) nearby	0-40cm: dark brown clay, saturated 40-60cm: brown loamy sand, sparse mottles @60cm: clayey loam with mottles	Next to existing development
DH3	Valley floor	Dense, tall growth of <i>Pennisetum clandestinum</i> (Kikuyu lawn grass) [f]	0-15cm: saturated clay 15-20cm: sandy layer (alluvial), saturated 20-30cm: loamy clay, saturated @40cm: dense clay, free water	
DH4	Slope	Near patch of <i>Typha capensis</i> (bulrush) [o]	0-10cm: organic layer (O-horizon), saturated 10-30cm: sandy layer with mottles, saturated 20-40cm: dense clay, saturated	
DH5	Slope	<i>Pennisetum clandestinum</i> (Kikuyu lawn grass) [f] Near patch of <i>Typha capensis</i> (bulrush) [o]	0-20cm: clayey loam, saturated 20-60cm: loamy clay with mottles @60cm: reddish clay layer (drier than layer above)	Near to drainage ditch
DH6	Slope	Dessicated <i>Pennisetum clandestinum</i> (Kikuyu lawn grass) [f]	0-50+cm: Reddish-brown sandy loam (dry) Ferricrete stones @40-50cm	
DH7	Valley floor	Bare soil	Clay at the surface	Disturbed area, presumably along the line of an underground pipeline Possibly has shallow standing water after rain
DH8	Valley floor	Dessicated <i>Pennisetum clandestinum</i> (Kikuyu lawn grass) [f] <i>Echium plantagineum</i> (Paterson's curse) [t]	0-20cm: sandy loam, dry (no mottles or oxidised root zones) Could not auger any deeper (too dry and sandy)	
DH9	Valley floor	<i>Pennisetum clandestinum</i> (Kikuyu lawn grass) [f]	0-5cm: dense clay layer 5-20cm: sandy loam, dry (no mottles) Could not auger any deeper (too dry and sandy)	On a raised platform (non-wetland?)
DH10	Valley floor	<i>Paspalum dilatatum</i> [w] along stream margin	0-20cm: sandy loam, with mottles and oxidised root zones	Channel of VB wetland
DH11	Valley floor	<i>Pennisetum clandestinum</i> (Kikuyu lawn grass) [f] <i>Paspalum dilatatum</i> [w]		
DH12 – DH20	Slope	<i>Typha capensis</i> (bulrush) [w]	Clay	Appears to be an excavated, artificially wet area
DH21	Valley floor	<i>Typha capensis</i> (bulrush) [w] <i>Pennisetum clandestinum</i> (Kikuyu lawn grass) [f] Near patch of <i>Cyperus papyrus</i> (Papyrus reed) [w]	0-20cm: grey-brown sand with mottles (dry) @20cm: dense clay layer	
DH22 – DH27	Valley floor	Patch of <i>Cyperus papyrus</i> (Papyrus reed) [w]		
DH28	Valley floor	<i>Pennisetum clandestinum</i> (Kikuyu lawn grass) [f]	0-20cm: grey-brown sand (no mottles or oxidised root zones) Could not auger any deeper (too dry and sandy)	
DH29 – DH36	Valley floor	Edge of patch of <i>Typha capensis</i> (bulrush) [w]		

\* [w] = obligate wetland species;  
[f] = facultative species;  
[t] = obligate terrestrial species