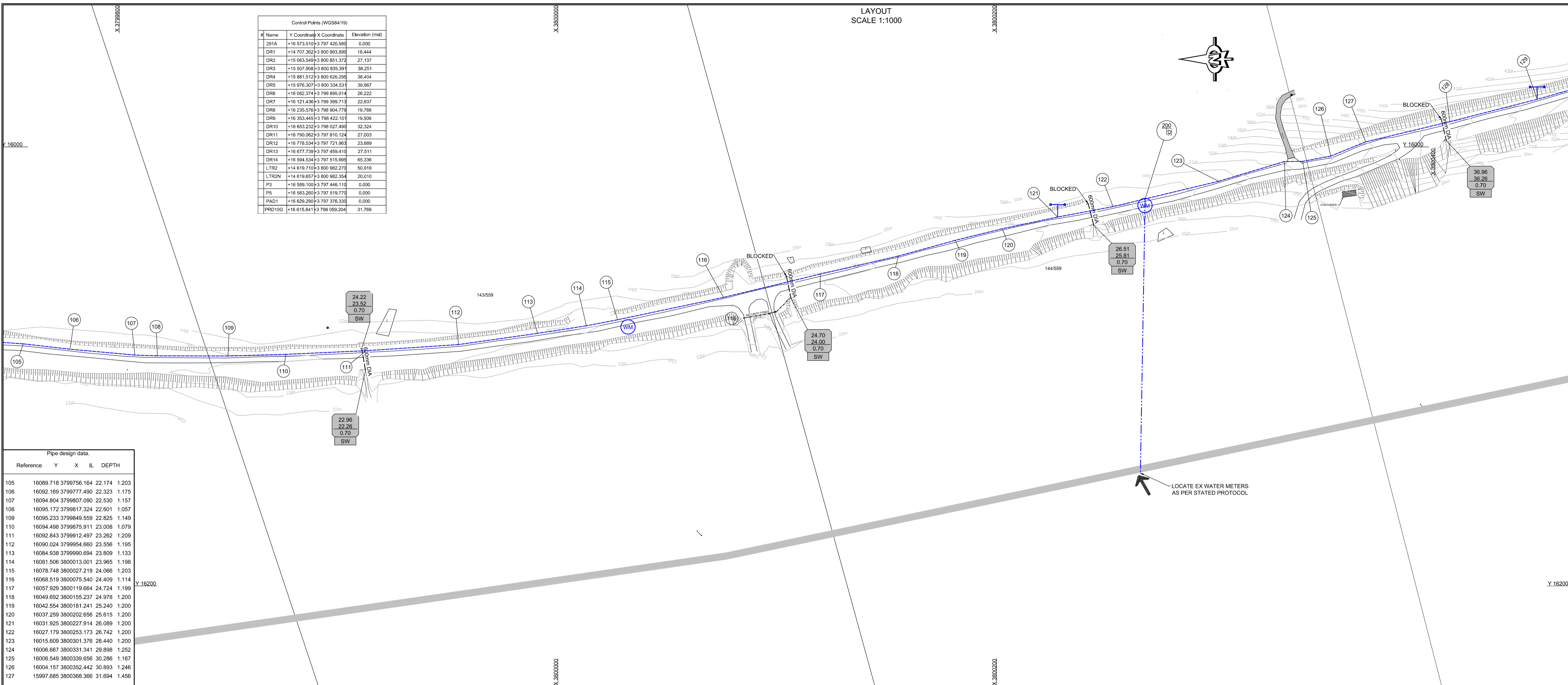


LAYOUT
SCALE 1:1000

#	Name	Y Coordinate	X Coordinate	Elevation (m)
291A	+16 573.510	+3 787 420.583		0.000
DR1	+14 707.362	+3 800 993.899		18.444
DR2	+15 683.349	+3 800 881.312		21.137
DR3	+15 567.904	+3 800 835.391		38.251
DR4	+15 881.512	+3 800 626.295		38.454
DR5	+15 976.307	+3 800 334.531		39.867
DR6	+16 082.374	+3 799 895.014		26.222
DR7	+16 121.436	+3 799 399.713		22.837
DR8	+16 235.576	+3 796 904.778		18.788
DR9	+16 363.445	+3 798 422.101		19.500
DR10	+16 663.232	+3 796 027.499		32.324
DR11	+16 780.062	+3 797 810.124		27.003
DR12	+16 778.534	+3 797 721.963		23.689
DR13	+16 677.739	+3 797 459.410		27.511
DR14	+16 984.534	+3 797 515.996		65.338
LTR2	+14 619.710	+3 800 982.270		50.919
LTR2N	+14 619.657	+3 800 982.354		20.010
P3	+16 588.100	+3 797 446.110		0.000
P5	+16 583.260	+3 797 519.770		0.000
PAD1	+16 629.290	+3 797 376.333		0.000
PHD10G	+16 615.841	+3 798 059.204		31.769

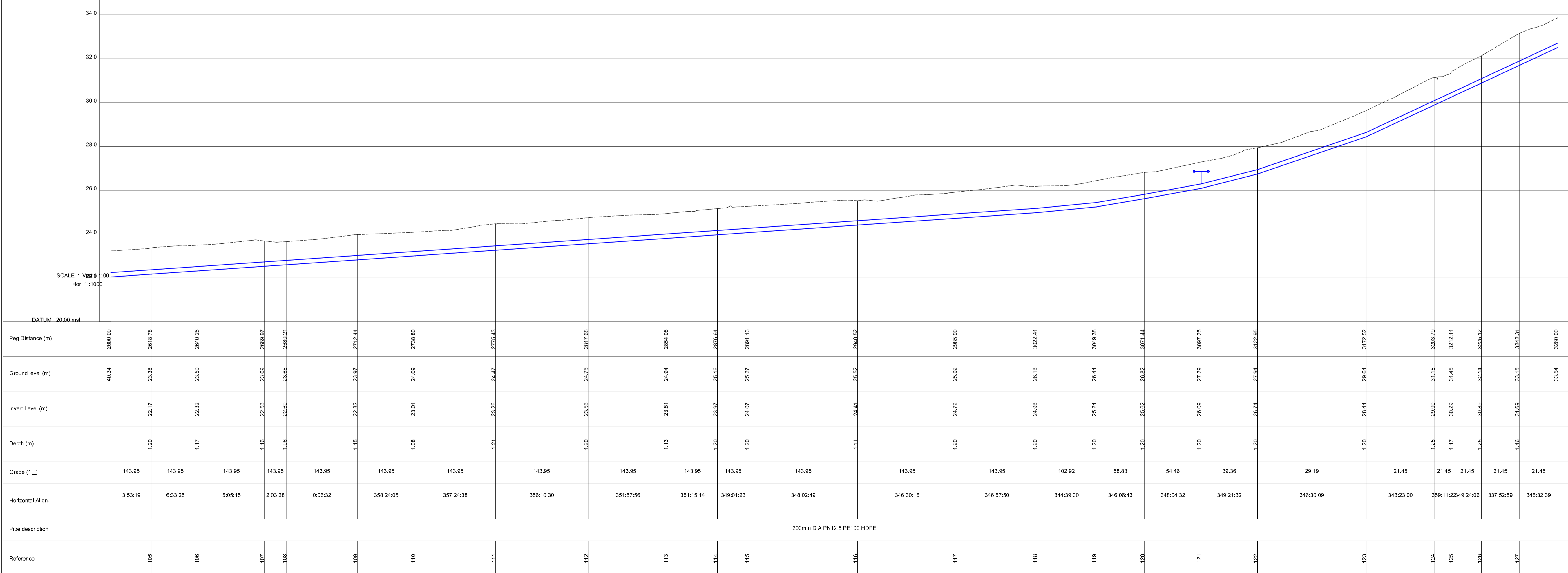
Reference	Y	X	IL	DEPTH
105	16089.718	3799756.164	22.174	1.203
106	16092.169	3799777.490	22.323	1.175
107	16094.804	3799807.090	22.530	1.157
108	16095.172	3799817.324	22.601	1.057
109	16095.233	3799849.559	22.825	1.149
110	16094.488	3799875.911	23.008	1.079
111	16092.843	3799912.497	23.262	1.209
112	16090.024	3799954.680	23.586	1.195
113	16084.938	3799990.694	23.899	1.133
114	16081.506	3800013.001	23.965	1.198
115	16078.748	3800027.219	24.066	1.203
116	16068.519	3800075.540	24.409	1.114
117	16057.929	3800119.664	24.724	1.199
118	16049.692	3800155.237	24.978	1.200
119	16042.554	3800181.241	25.240	1.200
120	16037.259	3800202.695	25.615	1.200
121	16031.925	3800227.914	26.089	1.200
122	16027.179	3800253.173	26.742	1.200
123	16015.609	3800301.376	28.440	1.200
124	16006.667	3800331.341	29.898	1.252
125	16005.549	3800339.656	30.286	1.167
126	16004.157	3800352.442	30.893	1.246
127	15997.685	3800368.366	31.694	1.456



NOTAS-NOTES

LEGEND

EXISTING	NEW	DESCRIPTION
- - - - -	- - - - -	WATER PIPELINE
- - - - -	- - - - -	200mm DIA PN12.5 PE100 HDPE
- - - - -	- - - - -	110mm DIA PN12.5 PE100 HDPE
- - - - -	- - - - -	32mm DIA PN12.5 PE100 HDPE ERF CONNECTION AS PER DETAIL
→	→	CONNECT TO EXISTING
⊗	⊗	SCOUR VALVE
⊕	⊕	AIR VALVE
⊘	⊘	BEND
⊕	⊕	VALVE
⊕	⊕	END CAP
⊕	⊕	SDR 13 HDPE SADDLE
⊗	⊗	HYDRANT
+	+	POLE
⊕	⊕	STREET LIGHT
- - - - -	- - - - -	STORMWATER PIPELINE
⊕	⊕	WATER METER
102.21 100.23 1.98 SW	102.21 100.23 1.98 SW	COVER LEVEL INVERT LEVEL DEPTH STORMWATER
- - - - -	- - - - -	FENCES
- - - - -	- - - - -	WALLS
⊕	⊕	TREES



Wys Rev	Datum Date	Beskrywing-Description
		Prof. Reg. No.
		Date
Raadgevende Ingenieur-Consulting Engineer		
Datum-Date:		
Klient-Client		
Projek-Project		
ROOI ELS TO PRINGLE BAY BULK WATER SUPPLY PIPELINE		
Titel-Title		
LAYOUT AND LONGITUDINAL SECTION: SHEET 5		
Skaal-Scale	Datum-Date	
AS SHOWN	FEBRUARY 2020	
Tek. Nr.-Drw. No.		Wyslg. Nr. Rev. No.
UDS 316/5		
HEAD OFFICE: SUITE 5 GARDNER WILLIAMS AVENUE SOMERSET WEST TEL: 021 851 7188		